



ARPA: American Rescue Plan Act

Adopted: 5/17/22 and 6/21/22

The Coronavirus State and Local Fiscal Recovery Funds provide a substantial infusion of resources to help turn the tide on the pandemic, address its economic fallout, and lay the foundation for a strong and equitable recovery.



Overview

The U.S. Department of the Treasury launch of the Coronavirus State and Local Fiscal Recovery Funds (“SLFRF”) was established by the American Rescue Plan Act of 2021. The Act contains \$350 billion in emergency funding for eligible state, local, territorial, and Tribal governments. Of the \$350 billion, Rhode Island will receive \$1.8 billion.

Treasury also released details on how these funds can be used to respond to acute pandemic response needs, fill revenue shortfalls among these governments, and support the communities and populations hardest-hit by the COVID-19 pandemic.

The total allocation for the Town of Smithfield is approximately \$6.545 million. The funds will be distributed over the next year. The amounts are broken down into two components as follows:

- Non-entitlement Aid to Municipalities - \$2,291,927
- County-based Aid to Municipalities share - \$4,253,236

This document is being developed for readers to provide narrative descriptions for each of the projects proposed for funding under the terms and conditions of the ARP FINAL Rule.

Funds must be obligated by December 31, 2024 and spent by December 31, 2026.

4 Criteria Based on US Treasury FRF Final Rule

“(1) to respond to the **public health** emergency with respect to the Coronavirus Disease 2019 (COVID-19) or its negative **economic impacts**, including assistance to households, small businesses, and nonprofits, or aid to impacted industries such as tourism, travel, and hospitality;

“(2) to respond to workers performing essential work during the COVID-19 public health emergency by providing **premium pay to eligible workers** of the metropolitan city, non-entitlement unit of local government, or county that are performing such essential work, or by providing grants to eligible employers that have eligible workers who perform essential work;

“(3) for the provision of government services to the extent of the **reduction in revenue** of such metropolitan city, non-entitlement unit of local government, or county due to the COVID-19 public health emergency relative to revenues collected in the most recent full fiscal year of the metropolitan city, non-entitlement unit of local government, or county prior to the emergency; or

***Added: The final rule offers a standard allowance for revenue loss of up to \$10 million, allowing recipients to select between a standard amount of revenue loss or complete a full revenue loss calculation. Recipients that select the standard allowance may use that amount – in many cases their full award – for government services, with streamlined reporting requirements**

“(4) to make necessary **investments** in water, sewer, or broadband infrastructure.



Eligible Uses for each criteria

Criteria (1)

- Mitigation and Prevention – To contain the spread of COVID-19 through services and programming as well as ventilation improvements in congregate settings.
- Responding to Negative Economic Impacts - Provide aid to small business and industries negatively impacted by COVID-19 and its effects on the local economy; economy remains 8.2 million jobs below its pre-pandemic peak. As such, these recessions can also cause longer-term economic challenges through damaged consumer credit scores and reduced familial and childhood well-being.
- Rehiring Government Staff – The rehiring of certain staff up to the pre-pandemic staffing level of the government to effectively administer government services.
- Building Stronger Communities through Investments in Housing and Neighborhoods - Assist organizations (non-profit) that serve the needs of vulnerable populations within the community, particularly those heavily impacted by the pandemic. Investments can range from assisting individuals to supporting redevelopment of entire neighborhoods.
- Promoting Healthy Childhood Environments – To provide services to address increases in economic hardship, material insecurity, and parental stress and behavioral health challenges all raise the risk of long-term harms to today’s children.

Criteria (2)

- Organizational Needs – Address needs within Town departments or amongst city essential employees that improve the capabilities of staff to respond to public needs and support employees most susceptible to COVID.
- Essential Workers – To provide premium pay to those workers entirely devoted to mitigating or responding to COVID-19. This includes those that faced or face heightened risks due to the character of their work involving regular in-person interactions or regular physical handling of items that were also handled by others.

Criteria (3)

- Revenue Loss (**Government Services**) – Losses claimed can be used for any government services such as maintenance of infrastructure or pay-go spending for building new infrastructure, including roads; modernization of cybersecurity, including hardware, software, and protection of critical infrastructure; health services; environmental remediation and the provision of police, fire and other public safety services. Pension contributions or rainy-day funds are not eligible. The final rule offers a standard allowance for revenue loss of \$10M, allowing recipients to select between a standard amount of revenue loss or complete a full revenue loss calculation. With the standard allowance Smithfield’s **full award** is eligible for government services.
- Examples:
 - Constructions of schools
 - Road building and maintenance, and other infrastructure
 - Health services
 - General government administration, staff and administrative facilities



- Environmental remediation
- Provision of police, fire, and other public safety services (including purchase of fire trucks and police vehicles)
- Government services is the most flexible eligible use category under the SLFRF program, and funds are subject to streamlined reporting and compliance requirements. Recipients should be mindful that certain restrictions, which are detailed further in the Restrictions on Use section and apply to all uses of funds, apply to government services as well.

Criteria (4)

- Infrastructure Investments – To assist in meeting the critical need for investments and improvements to existing infrastructure in water, sewer, and broadband. To improve access to clean drinking water, improve wastewater and stormwater infrastructure systems and provide access to high-quality broadband service. Must consider resilience to climate change or establish/improve broadband service to unserved/underserved population to reach an adequate level to permit a household to work or attend school.
 - Water and Sewer Infrastructure will need to align with Clean Water and Drinking Water regulations.
 - Broadband Infrastructure has become even more critical for people across the country to carry out their daily lives thus the importance of available, reliable and affordable broadband coverage.

Restricted Uses for each criteria

While recipients have considerable flexibility to use Coronavirus State and Local Fiscal Recovery Funds to address the diverse needs of their communities, some restrictions on use of funds apply.

OFFSET A REDUCTION IN NET TAX REVENUE

- **States and territories may not use this funding to directly or indirectly offset a reduction in net tax revenue resulting from a change in law, regulation, or administrative interpretation beginning on March 3, 2021 through the last day of the fiscal year in which the funds provided have been spent.** If a state or territory cuts taxes during this period, it must demonstrate how it paid for the tax cuts from sources other than SLFRF, such as by enacting policies to raise other sources of revenue, by cutting spending, or through higher revenue due to economic growth. If the funds provided have been used to offset tax cuts, the amount used for this purpose must be repaid to the Treasury.

DEPOSITS INTO PENSION FUNDS

- **No recipients except Tribal governments may use this funding to make a deposit to a pension fund.** Treasury defines a “deposit” as an extraordinary contribution to a pension fund for the purpose of reducing an accrued, unfunded liability. While pension deposits are prohibited, recipients may use funds for routine payroll contributions connected to an eligible use of funds (e.g., for public health and safety staff). Examples of extraordinary payments include ones that:
 - Reduce a liability incurred prior to the start of the COVID-19 public health emergency and occur outside of the recipient's regular timing for making the payment.



- Occur at the regular time for pension contributions but is larger than a regular payment would have been.

ADDITIONAL RESTRICTIONS AND REQUIREMENTS

Additional restrictions and requirements that apply across all eligible use categories include:

- **No debt service or replenishing financial reserves.** Since SLFRF funds are intended to be used prospectively, recipients may not use SLFRF funds for debt service or replenishing financial reserves (e.g., rainy day funds).
- **No satisfaction of settlements and judgments.** Satisfaction of any obligation arising under or pursuant to a settlement agreement, judgment, consent decree, or judicially confirmed debt restructuring in a judicial, administrative, or regulatory proceeding is itself not an eligible use. However, if a settlement requires the recipient to provide services or incur other costs that are an eligible use of SLFRF funds, SLFRF may be used for those costs.
- **Additional general restrictions.** SLFRF funds may not be used for a project that conflicts with or contravenes the purpose of the American Rescue Plan Act statute (e.g., uses of funds that undermine COVID-19 mitigation practices in line with CDC guidance and recommendations) and may not be used in violation of the Award Terms and Conditions or conflict of interest requirements under the Uniform Guidance. Other applicable laws and regulations, outside of SLFRF program requirements, may also apply (e.g., laws around procurement, contracting, conflicts-of-interest, environmental standards, or civil rights).

Utilization of Funding

Utilization of funding in conjunction with the Fiscal Year 2023 Operating Budget

- By utilizing the American Rescue Plan Act funding in conjunction with the Fiscal Year 2023 Operating Budget the Town will be able to recognize additional RI Department of Education Housing Aid Funds in the form of a 35%-45% reimbursement for school capital expenditures. On May 17th the Town Council approved the first allocation of funding for projects and programs totaling \$3,385,100.
- On June 21st the Town Council approved the second allocation of funding for project and programs totaling \$3,160,000 which includes a transfer of expenditures for capital projects and budgeted improvements from the Fiscal Year 2023 Operating Budget. This transfer allowed school capital projects in the amount of \$1,123,500 to be funded through the operating budget allowing the Town the opportunity to maximize its RI Department of Education Housing Aid reimbursement.

Town of Smithfield – Proposed American Rescue Plan Act Funding Program



Summary of Projects and Estimates

	1 st Tranche Rec'd	2 nd Tranche (Est.)	Total Allocation (Est.)
Non-entitlement Aid to Municipalities	1,145,963.66	1,145,963.66	2,291,927.32
County-based Aid to Municipalities	2,126,617.78	2,126,617.79	4,253,235.57
Totals	3,272,581.44	3,272,581.45	6,545,162.89

Total Available Funds

6,545,162.89

Proposed Projects and Uses

Business Assistance Grants	100,000
ADA Bleacher Replacement Program (Town-wide)	60,000
Boyle Athletic Complex	1,600,000
Burgess Field Improvements	93,500
Dog Shelter Capital Contribution	240,000
East Smithfield Neighborhood Center	525,000
East Smithfield Public Library	50,000
Emergency Management Equipment	40,000
Georgiaville Pond Aeration System	21,600
Greenville Public Library	50,000
Innovation Grant Funding	60,000
Mental Health and Substance Use Support	150,000
Modernization of Town-wide Cyber Network	400,000
Public Safety Equipment (Police and Fire)	700,000
Recreation Programming, Equipment and Part-Time Staff	200,000
Refuse/Recycling Program Containers	16,000
Road Improvements / Paving	1,000,000
Sidewalk Program	100,000
School Capital Projects (HS Auditorium & GMS Gymnasium)	400,000
Senior Center Conversion Van	70,000
Senior Center Rear Sidewalk Reconstruction	15,000
Town Council Chambers Virtual Equipment	24,000
Town Hall HVAC Replacement	350,000
Town website redesign and development	30,000
Whipple Field Parking and Entrance	250,000

Total Budget Amount

6,545,100



Project Descriptions

BUSINESS ASSISTANCE GRANT PROGRAM - \$100,000

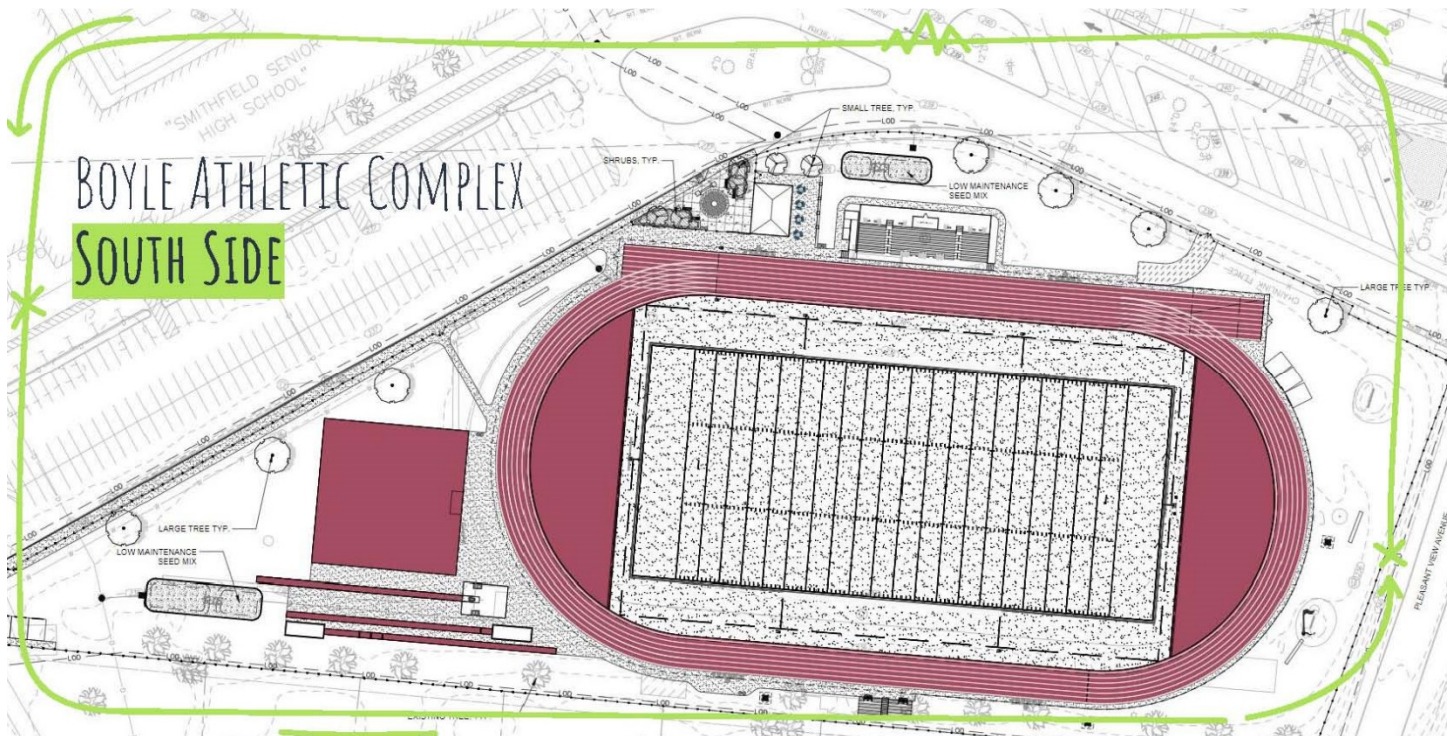
This funding will create the Town's COVID-19 Small Business Grant Program. The goal of this grant program is to provide micro-grants to businesses throughout the Town of Smithfield to support economic recovery from the effects of the COVID-19 pandemic. Individual grants of \$3,000, subject to change based on other considerations, will be provided to those businesses that were negatively impacted by the COVID-19 pandemic and meet the necessary qualifications.

ADA BLEACHER REPLACEMENT PROGRAM (23-P&R-09) - \$60,000

The ADA Bleacher Replacement Program will replace existing bleachers located town-wide at the Town Recreational fields to comply with safety codes and ADA requirements.

BOYLE ATHLETIC COMPLEX (23-SCH-01) - \$1,600,000

The scope of this project will include a new turf multisport field, track and field running track, scoreboard, press box, bleachers, and track and field event surfaces. The funding for the overall project will be split between the Town and School Department.



BURGESS FIELD IMPROVEMENTS (23-P&R-03) - \$93,500

The efforts of this project are to help revitalize an underutilized facility to help meet the growing needs of field use. The project will include the removal and replacement of the existing dugouts, renovate the playing field, improvements to the perimeter fencing, and redesign of the parking area.

Town of Smithfield – Proposed American Rescue Plan Act Funding Program



ANIMAL SHELTER CAPITAL CONTRIBUTION - \$240,000

The Town of Smithfield is currently in the process of entering into a 20-year agreement with the Towns of North Providence and Johnston for a new animal shelter facility. The tri-town facility will house all three animal control units with adequate space to accommodate the animals from all three communities. The facility is designed with the intent to house the three communities for at least forty (40) years. The \$240,000 will be the town's upfront capital contribution for the project with the remainder (\$456,000-\$240,000 = \$216,000) to be paid as a monthly contribution of \$900 for twenty (20) years. The agreement provides an option to renew for an additional twenty (20) years for no additional cost beyond the prorated expense (utilities, supplies, etc.).

EAST SMITHFIELD NEIGHBORHOOD CENTER - \$525,000

The East Smithfield Neighborhood Center is an essential part of the community and is a priority to be reopened with a purpose. The plan for the facility is to house the Parks and Recreation Office, Department of Human Services and Food Pantry, Health Services, Smithfield Youth Council, Social Services and community programming. This funding will assist in the overall project costs for the completion of the project.

EMERGENCY MANAGEMENT EQUIPMENT - \$40,000

The Smithfield Emergency Management Department continues to be a crucial part of the operations for the Town. It was because of their early planning and preparedness that helped Smithfield to be a leader within the state throughout the COVID pandemic. These funds will be used for the purchasing of personal protective equipment (PPE), an upgrade to the emergency services unit 1, response equipment upgrades and additions, and necessary equipment for the Emergency Operations Center.

GEORGIAVILLE POND AERATION SYSTEM – \$21,600

Georgiaville Pond continues to be a key part of the summer experience in Town. Over the years, we have continued to battle with blue-green algae that causes the beach to be closed for long periods of time during the hottest parts of the summer. This past summer an aeration fountain was added to the waterway helping to reduce the growth of the algae within the pond. This project will add two additional underwater aeration units to continue to improve the pond and help to reduce the chance of additional closures.

INNOVATION GRANT FUNDING - \$60,000

The Innovation Grant Program was developed in conjunction with the Budget and Financial Review Board to allow any Town Department to compile an idea to prototype or pilot a project to a) expand or increase the effectiveness of a current service or b) create a new service. This initiative will provide the environment for any department leader to consider any thoughts on any approach which will transform and/or expand current services. These funds will help to get the project started for the upcoming fiscal year.

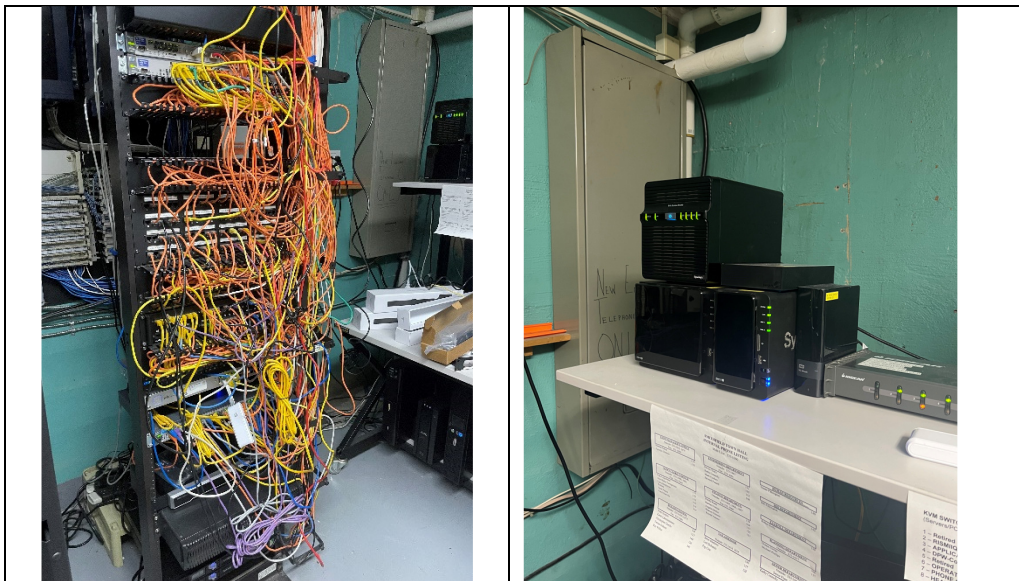
MENTAL HEALTH AND SUBSTANCE USE SUPPORT - \$150,000

Mental Health and Substance Use is a growing matter that needs increased support to help those suffering. Many who had preexisting mental health and/or substance uses issues saw their symptoms exacerbated during the pandemic and others that had no previous mental health or substance use problems found themselves experiencing symptoms. Clearly, mental health and substance use issues among members of the community have grown due to the pandemic and as a result we need to focus our efforts to support those that are suffering. The focus of this funding will help with the overall social service and support needs of the community.



MODERNIZATION OF TOWN-WIDE CYBER NETWORK (23-TA-01) - \$400,000

Outdated Information Technology infrastructure can make a town vulnerable to cyber threats, network failures, outages, reduction in productivity and, oftentimes, manufacturers stop supporting the system. Network switches connect multiple devices and access points that enables devices to share information while routers allow different networks to communicate. It is critical that all town locations are updated with new Wi-Fi, routers and switches to ensure faster speeds, security and better connections.



PUBLIC SAFETY EQUIPMENT (POLICE AND FIRE DEPARTMENTS) (23-PD-01 & 23-FD-07) - \$700,000

This funding will assist in the purchase of a new rescue, and three (3) police vehicles as part of their vehicle replacement program. Due to build time for the police vehicles, the town council approved reallocating the funds for the purchase of a mobile command unit.

RECREATION PROGRAMMING, EQUIPMENT AND PART-TIME STAFF - \$200,000

Because of Covid-19, it is expected that there will be a higher level of need for recreational activities and programs due to mental health and behavioral challenges as a result of prolonged isolation and reduced social interaction. This funding will be used for capital equipment investments, programming, and a part time, temporary program coordinator to develop and implement a programming plan.

REFUSE AND RECYCLING PROGRAM CONTAINERS (23-DPW-09) - \$16,000

The purchase of these two containers will allow for the collection of additional recycling materials at the Town Recycling Center located at the Department of Public Works facility. The containers will be equipped with Swap loader frames to allow the Department of Public Works to transport the materials.

ROAD IMPROVEMENTS AND PAVING - \$1,000,000

This funding will be an infusion to the Town's pavement management plan and allow for additional roadways to be addressed in the upcoming paving season.

Town of Smithfield – Proposed American Rescue Plan Act Funding Program



SCHOOL CAPITAL PROJECTS (HS AUDITORIUM AND GMS SCHOOL GYMNASIUM) (23-SCH-04 & 20) - \$400,000

The Smithfield High School auditorium currently has no working sound system and its theatrical lights do not perform as needed for drama, music and public events. Additionally, modifications to the stage are necessary to improve accessibility. The project will also include improvements to aesthetics with painting and minor cosmetic improvements.

The Gallagher Middle School Gymnasium project will include the refinishing and painting of the gym floor, replacement of the existing bleachers with power bleachers and the installation of new wall pads.

SENIOR CENTER CONVERSION VAN (23-SC-02) - \$70,000

Periodic replacement of the senior van transportation is necessary due to the use of the vehicles. The purchase of the conversion van will be used to cycle out the spare van (2008 18-passenger van with 241,509) and transitioning the main van into the spare role. Due to long production delays for vehicles, it is necessary to place the order for the new vehicle in the near future.

SENIOR CENTER REAR SIDEWALK RECONSTRUCTION (23-SC-01) - \$15,000

The redesign and reconstruction of the rear sidewalk area will help to reduce flooding in the bocce court and surrounding area.

SMITHFIELD PUBLIC LIBRARIES (EAST SMITHFIELD PUBLIC LIBRARY AND GREENVILLE PUBLIC LIBRARY) - \$100,000

This funding will provide funds for the two public libraries in town to allow them to complete numerous capital projects such as flooring, an additional checkout station, and equipment replacement at each of the locations. Each library will receive \$50,000 each to complete these projects.

TOWN COUNCIL CHAMBERS VIRTUAL EQUIPMENT (\$24,000)

The Town's ability to offer remote programs and meeting access has been limited due to age of the current equipment within the Town Council Chambers. Upgrading the town's audio/visual capabilities will improve the quality of the recordings while creating the flexibility for "hybrid" meetings.

During the pandemic, remote meetings via Zoom were the norm. These meetings included Town Council and town boards and commissions, staff meetings and departmental meetings. As municipal services return to in-person, we recognize the need for a "hybrid" meeting model to accommodate in-person and remote participation in the future. This will require an upgrade to audio visual equipment in the Council Chambers. The estimated cost for upgraded equipment and installation for the Council Chambers is \$24,000.

TOWN HALL HVAC REPLACEMENT (23-TH-04) - \$350,000

As employers, we are responsible for providing a safe and healthy workplace and due to COVID we are taking steps to improve ventilation in the town hall and upgrading our outdated systems. The upgrade and/or replacement of older systems in town hall will make the buildings more energy efficient and have adequate air flow.

As stated by the CDC, proper ventilation will help reduce the spread of disease and lower the risk of exposure ventilation, open doors and windows are mitigation strategies that can help reduce viral particle concentration. The lower the concentration, the less likely viral particles can be inhaled into the lungs (potentially lowering the

Town of Smithfield – Proposed American Rescue Plan Act Funding Program



inhaled dose); contact eyes, nose, and mouth; or fall out of the air to accumulate on surfaces. Protective ventilation practices and interventions can reduce the airborne concentrations and reduce the overall viral dose to occupants.

Replacing outdated equipment and installing HVAC systems to include central air with full air exchange systems can limit indoor spread by exchanging and filtering air. Bringing in fresh, outdoor air helps keep virus particles from accumulating inside.

TOWN WEBSITE REDESIGN AND DEVELOPMENT - \$30,000

This project will include a complete redesign and development of the Town of Smithfield website. The new site would allow for mobile viewing, improved flow of information and enhanced technology to benefit the users.

WHIPPLE FIELD PARKING AND ENTRANCE – (23-P&R-02) - \$350,000

Parking is insufficient and not clearly defined at the Whipple Field Complex during game days and events. Visitors often need to park on the street which obstructs traffic and creates a dangerous situation. Reconfiguring the entrance and aligning it with the intersection of Whipple Road and Fenwood Avenue would improve the safety of the intersection as well as provide up to 40 additional parking spaces. As part of the project, we intend to purchase adjacent land to expand parking to provide an additional 30 spaces.

Additional Information

Funding for School Department projects might be transferred to the Town's operating budget and replaced with Town based capital projects that are proposed in the operating budget prior to final operating budget approval. By transferring projects between the ARPA Funding Plan and the Town's operating budget it will help to maximize the Town's Housing Aid Reimbursement through the Rhode Island Department of Education.



Approval Memos



memorandum

DATE: May 12, 2022

TO: Smithfield Town Council

FROM: Randy R. Rossi, Town Manager

RE: Proposed American Rescue Plan Act Funding Program

The American Rescue Plan Act Funding provides an optimal opportunity for the Town of Smithfield to address outstanding needs of the community while helping to minimize the impact on future operating budgets. The proposed plan has been developed based on a thorough review of both the short-term and long-term necessities of the Town while maximizing the support to projects, programs and services town-wide.

By utilizing the American Recuse Plan Acting funding in conjunction with the Fiscal Year 2023 Operating Budget the Town will be able to recognize additional RI Department of Education Housing Aid Funds in the form of a 35%-45% reimbursement for school capital expenditures. In order to accommodate this approach I am requesting the Town Council's consideration in splitting the approval of the proposed plan with projects and programs totaling \$3,385,100 at the May 17th Town Council Meeting and the remainder to be considered in with the adoption of the Fiscal Year 2023 Operating Budget.

MOTION:

That the Smithfield Town Council hereby approves the proposed American Rescue Plan Act Funding allocation of \$3,385,100 to include the following projects and programs:

Proposed Projects and Uses for consideration May 17, 2022

Business Assistance Grants	100,000
ADA Bleacher Replacement Program (Town-wide)	60,000
Burgess Field Improvements	93,500
Dog Shelter Capital Contribution	240,000
East Smithfield Neighborhood Center	525,000

East Smithfield Public Library	50,000
Emergency Management Equipment	40,000
Georgiaville Pond Aeration System	21,600
Greenville Public Library	50,000
Mental Health and Substance Use Support	150,000
Modernization of Town-wide Cyber Network	400,000
Public Safety Equipment (Police and Fire)	700,000
Recreation Programming, Equipment and Part-Time Staff	200,000
Refuse/Recycling Program Containers	16,000
Senior Center Conversion Van	70,000
Senior Center Rear Sidewalk Reconstruction	15,000
Town Council Chambers Virtual Equipment	24,000
Town Hall HVAC Replacement	350,000
Town website redesign and development	30,000
Whipple Field Parking and Entrance	250,000
Total Proposed Amount	<u>3,385,100</u>

Proposed Projects and Uses for consideration May 17, 2022

Business Assistance Grants	100,000
ADA Bleacher Replacement Program (Town-wide)	60,000
Burgess Field Improvements	93,500
Dog Shelter Capital Contribution	240,000
East Smithfield Neighborhood Center	525,000
East Smithfield Public Library	50,000
Emergency Management Equipment	40,000
Georgiaville Pond Aeration System	21,600
Greenville Public Library	50,000
Mental Health and Substance Use Support	150,000
Modernization of Town-wide Cyber Network	400,000
Public Safety Equipment (Police and Fire)	700,000
Recreation Programming, Equipment and Part-Time Staff	200,000
Refuse/Recycling Program Containers	16,000
Senior Center Conversion Van	70,000
Senior Center Rear Sidewalk Reconstruction	15,000
Town Council Chambers Virtual Equipment	24,000
Town Hall HVAC Replacement	350,000
Town website redesign and development	30,000
Whipple Field Parking and Entrance	250,000
Total Proposed Amount	<u>3,385,100</u>

Proposed Projects and Uses for consideration with FY 2023 Budget

Boyle Athletic Complex	1,600,000
Road Improvements / Paving	1,000,000
Sidewalk Program	100,000
School Capital Projects (HS Auditorium & GMS Gymnasium)	400,000
Innovation Grant Funding	60,000
Total Proposed Amount	<u>3,160,000</u>

Total Plan Amount: **6,545,100**



memorandum

DATE: June 15, 2022

TO: Smithfield Town Council

FROM: Randy R. Rossi, Town Manager

RE: Proposed American Rescue Plan Act Funding Program

The American Rescue Plan Act Funding provides an optimal opportunity for the Town of Smithfield to address outstanding needs of the community while helping to minimize the impact on future operating budgets. The proposed plan has been developed based on a thorough review of both the short-term and long-term necessities of the Town while maximizing the support to projects, programs and services town-wide.

By utilizing the American Recuse Plan Acting funding in conjunction with the Fiscal Year 2023 Operating Budget the Town will be able to recognize additional RI Department of Education Housing Aid Funds in the form of a 35%-45% reimbursement for school capital expenditures. On May 17th the Town Council approved the first allocation of funding for projects and programs totaling \$3,385,100.

This proposed funding allocation takes into account the transfer of expenditures for capital projects and budgeted improvements from the Fiscal Year 2023 Operating Budget. This transfer allowed school capital projects in the amount of \$1,123,500 to be funded through the operating budget allowing the Town the opportunity to maximize its RI Department of Education Housing Aid reimbursement.

MOTION:

That the Smithfield Town Council hereby approves the proposed American Rescue Plan Act Funding allocation of \$3,160,000 to include the following projects and programs:

Proposed Projects and Uses for consideration with FY 2023 Budget

Boyle Athletic Complex		876,500
Fire Department		80,000
Protective Clothing	10,000	
Morton Building	70,000	
	<hr/>	
Parks and Recreation Department		125,000
61" Scag Mower	35,000	
1 Ton Dump Truck with Plow	65,000	
Willow Field Rehabilitation	25,000	
	<hr/>	
Public Works Department		93,500
Salt Brine Mixing System	30,000	
51" Ribbon Snow Blower	18,000	
5 Position V Snowplow	7,500	
Rear Sander Triple Auger	9,000	
Front Flail Mower	11,500	
Swap Loader Open Top Containers	17,500	
	<hr/>	
Legislative and Policy		70,000
Indian Run - Wampum Sidewalk Project	35,000	
305 Mountaindale Road Culvert Investigation	35,000	
	<hr/>	
Town Hall Vehicle Replacement		30,000
Senior Center Roof - Old Wing		25,000
Road Improvements / Paving		
(\$600,000 removed from FY 23 Operating Budget)		1,600,000
Sidewalk Program		100,000
Whipple Field Parking and Entrance		100,000
Innovation Grant Funding		60,000
	<hr/>	
Total Proposed Amount		3,160,000